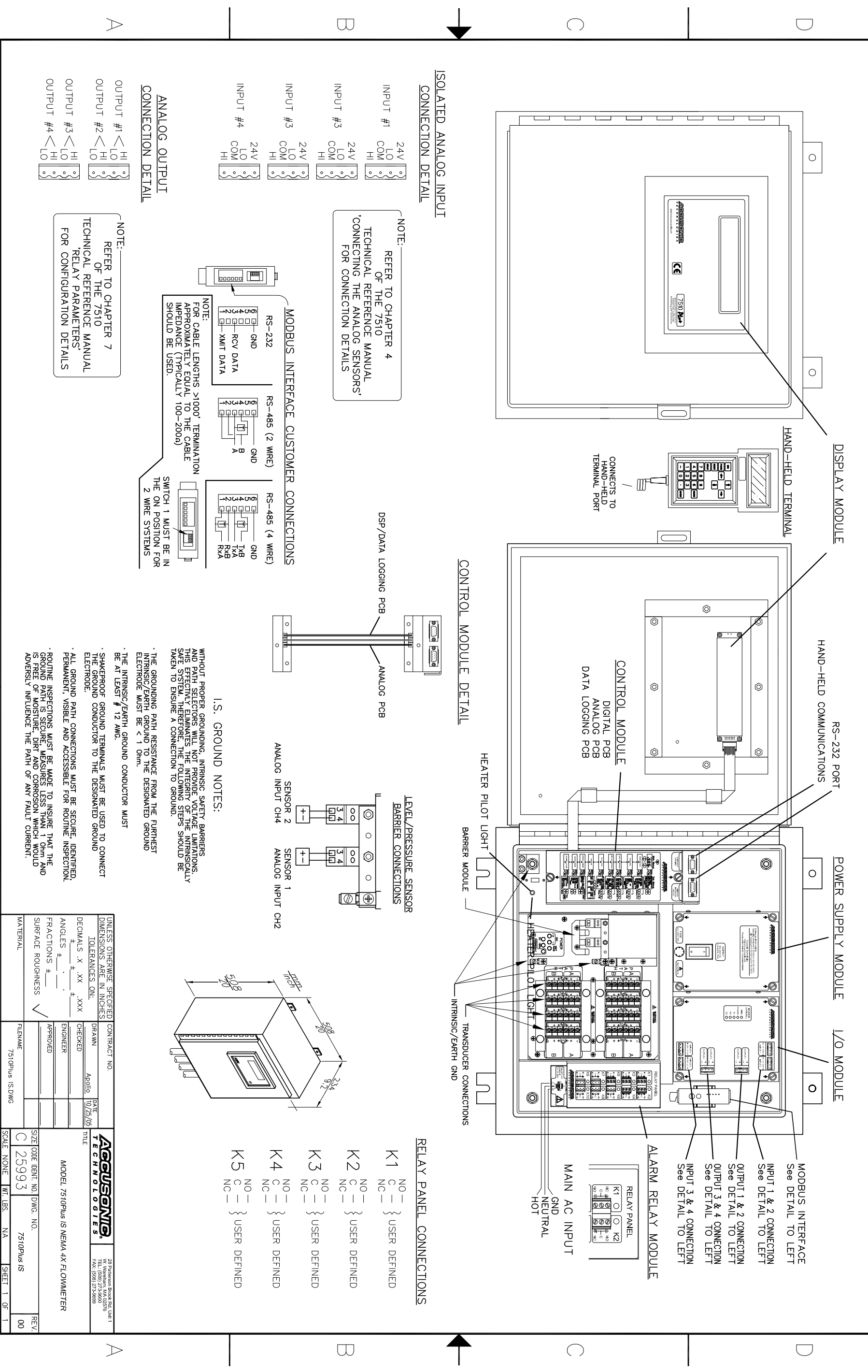
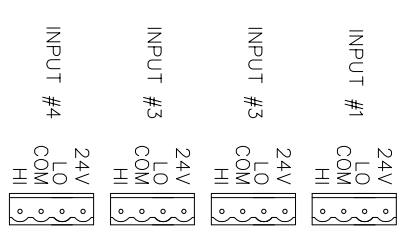


THIS DRAWING IS LOANED WITHOUT OTHER CONSIDERATION THAN THE AGREEMENT AND CONDITION THAT IT IS NOT TO BE REPRODUCED, COPIED, OR OTHERWISE DISPOSED OF, DIRECTLY OR INDIRECTLY, AND IS NOT TO BE USED IN WHOLE OR IN PART TO ASSIST IN MAKING OR TO FURNISH ANY INFORMATION FOR THE MAKING OF DRAWINGS, PRINTS, APPARATUS, OR PARTS THEREOF.

REVISIONS		DATE	APPROVED
ZONE	LTR	DESCRIPTION	

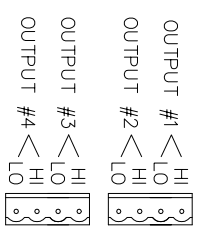


**ISOLATED ANALOG INPUT CONNECTION DETAIL**



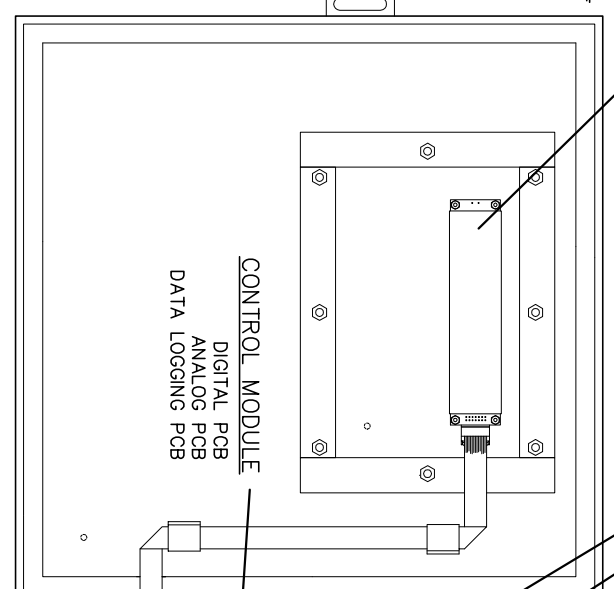
NOTE: REFER TO CHAPTER 4 OF THE 7510 'TECHNICAL REFERENCE MANUAL' FOR CONNECTION DETAILS

**ANALOG OUTPUT CONNECTION DETAIL**

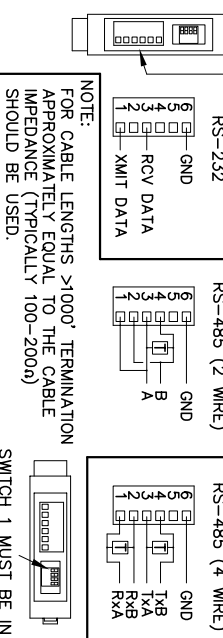


NOTE: REFER TO CHAPTER 7 OF THE 7510 'TECHNICAL REFERENCE MANUAL' FOR CONFIGURATION DETAILS

**CONTROL MODULE DETAIL**

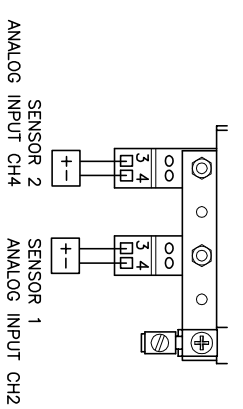


**MODBUS INTERFACE CUSTOMER CONNECTIONS**



NOTE: FOR CABLE LENGTHS >1000' TERMINATION APPROXIMATELY EQUAL TO THE CABLE IMPEDANCE (TYPICALLY 100-200Ω) SHOULD BE USED.

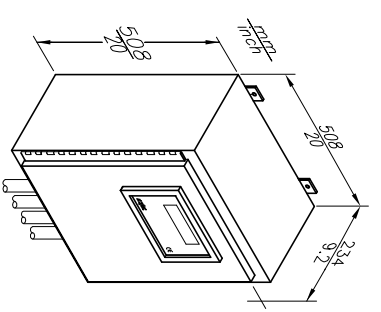
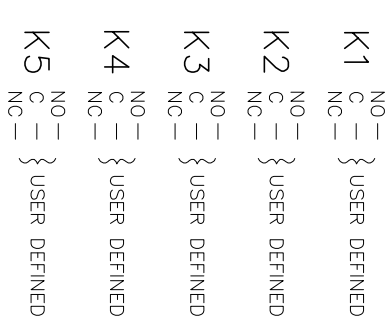
**LEVEL/PRESSURE SENSOR BARRIER CONNECTIONS**



**I.S. GROUND NOTES:**

- WITHOUT PROPER GROUNDING, INTRINSIC SAFETY BARRIERS AND PATH SELECTORS WILL NOT PROVIDE VOLTAGE LIMITATIONS. THIS EFFECTIVELY ELIMINATES THE INTEGRITY OF THE INTRINSICALLY SAFE SYSTEM. THEREFORE, THE FOLLOWING STEPS SHOULD BE TAKEN TO ENSURE A CONNECTION TO GROUND.
- THE GROUNDING PATH RESISTANCE FROM THE FURTHEST INTRINSIC/EARTH GROUND TO THE DESIGNATED GROUND ELECTRODE MUST BE < 1 Ohm.
- THE INTRINSIC/EARTH GROUND CONDUCTOR MUST BE AT LEAST #12 AWG.
- SHAKEROOF GROUND TERMINALS MUST BE USED TO CONNECT THE GROUND CONDUCTOR TO THE DESIGNATED GROUND ELECTRODE.
- ALL GROUND PATH CONNECTIONS MUST BE SECURE, IDENTIFIED, PERMANENT, VISIBLE AND ACCESSIBLE FOR ROUTINE INSPECTION.
- ROUTINE INSPECTIONS MUST BE MADE TO INSURE THAT THE GROUND PATH IS SECURE, MEASURES LESS THAN 1 Ohm AND IS FREE OF MOISTURE, DIRT AND CORROSION WHICH WOULD ADVERSELY INFLUENCE THE PATH OF ANY FAULT CURRENT.

**RELAY PANEL CONNECTIONS**



UNLESS OTHERWISE SPECIFIED DIMENSIONS ARE IN INCHES		CONTRACT NO.		DATE	
TOLERANCES ARE:		DRAWN		CHECKED	
DECIMALS ± .XX .XXX		Apolite		10/29/05	
ANGLES ± . . .		ENGINEER			
FRACTIONS ± . . .		APPROVED			
SURFACE ROUGHNESS		FILENAME		SIZE	
✓		7510Plus IS.DWG		C 25993	
MATERIAL		SCALE		WT. LBS.	
		NONE		NA	
		SHEET		1 OF 1	
MODEL 7510Plus IS NEMA 4X FLOWMETER					
22 Palmyra Brook Rd, Unit 1 TEL: (508) 273-5800 FAX: (508) 273-5899					
REV. 00					

4

3

2

NOT A CONTROLLED DOCUMENT UNLESS MARKED CONTROLLED